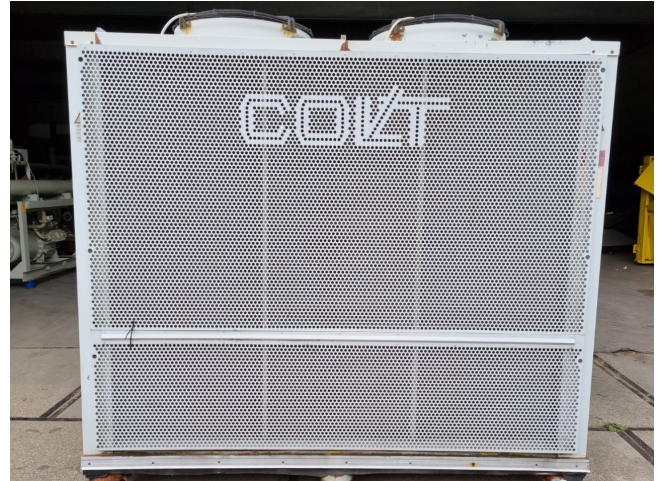


Colt CHA/WP 302P

Specifications

Brand	Colt
Type	CHA/WP 302P
Product type	Heat pump
Capacity kW	54,9
Capacity Tons	15,6
Refrigerant	Freon
Refrigerant Type	R407C
Pump	✓
Hydronic Module	✓
Weight in kg.	830
Sizes	2370x1140x2380 mm (LxWxH)
Compressor(s) type & model	2x Copeland ZR19M3E-TWD-551
Number of fans	2
Stock	1

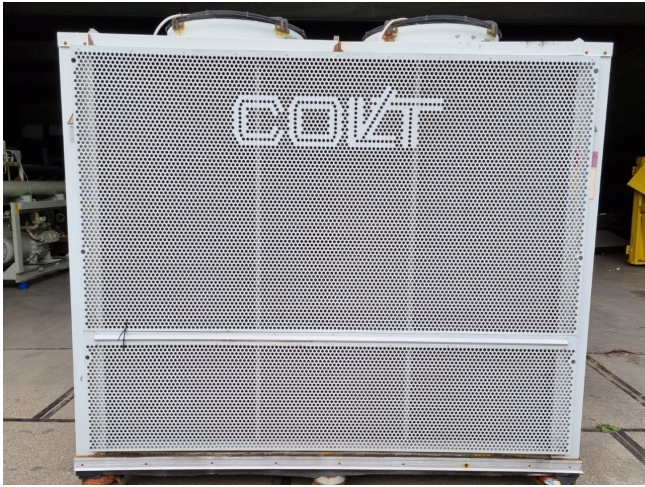


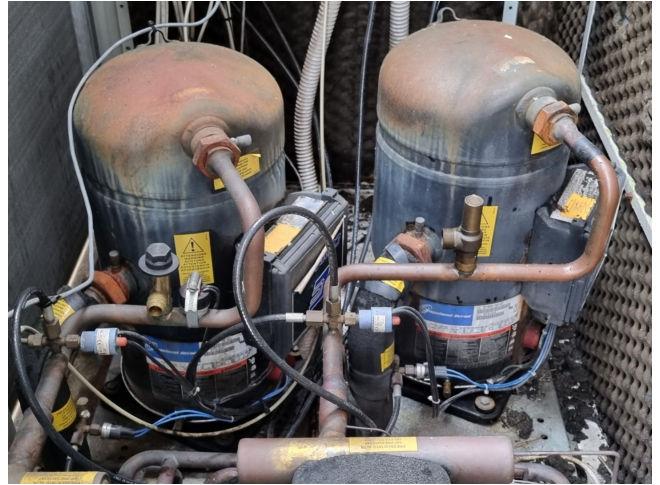
Description

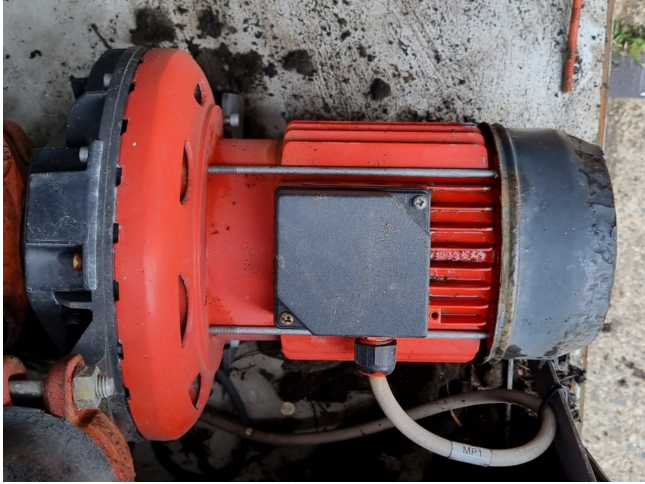
Used Colt CHA/WP 302P

Used Colt CHA/WP 302P reversible heat pump on R407C. Complete with 2 Copeland ZR19M3E-TWD-551 scroll compressors, condensor with 2 fans that have a total airflow of 27.720 m³/h, braced heat exchanger as evaporator, 2 Frigo Mec RV-155X422 liquid receivers with a volume of 6,6 liter, liquid line filter drier and a expansion vessel.

*All components of this used chiller will be tested on adequate performance, leak free condition (condensing blocks), compressors, fans, control panel, and so forth). Choosing HOSBV means buying with warranty. We perform an industrial cleaning. *If requested we are happy to arrange your shipment.







		LEGNAGO VERONA-Italy I-37048		
Tipo	RV-155X422			
Fabbricazione- Nr.	7304120			
Anno di fabbricazione	2007			
Volume V: L	6.6	Fluidi	G. 2	
Temperatura TS-°C	Min -10		Max 100	
Pres. max consentita PS-bar	32			
Pres. di collaudo PT-bar	45.76			
Identificazione + Nr.	CE 0036 Cat. II			